

2016 Annual Report

summarizing the programs of



Detail of *Fleet* by Emily White featured in *A Curious Nature* at the Philadelphia Art Alliance
October 6 – December 4, 2016

With Gratitude to Our Contributors

Marta and Bob Adelson
Barbara and Ted Aronson
Sally Bleznak
Jill and Sheldon Bonovitz
Wendy and Morton Branzburg
Suzanne and Norman Cohn
Jane Davis
Jaimie and David Field
Dr. and Mrs. Gary Finkelstein
Bill Gehrman
Drs. Lillian and Joseph Hassman
Tyler Hayes, BDDW
Clara and Ben Hollander
Thora Jacobson
Joan Johnson
Jinous Kazemi and Howard Verlin
Carol Klein and Larry Spitz
Beth and Billy Landman
The Mayor's Fund of Philadelphia
Frances Metzman
Office of the Arts, Culture and Creative Economy
Zoe Pappas
Philadelphia Museum of Art Women's Committee
Larry Reichlin
Aileen and Brian Roberts
Lisa Roberts and David Seltzer
Jeanne Ruddy and Victor Keen
Carol Saline and Paul Rathblott
Carole and Joseph Shanis
Judith Tannenbaum
Elissa Topol
Richard Vague
Caroline Wischmann and David Rasner

Annual Report summarizing 2016 programming for CraftNOW Philadelphia

Background

Throughout American history, the Philadelphia region has been recognized as a national leader in the field of craft and the handmade. This legacy dates back to the early days of the colonial period when superior quality furnishings were being crafted in the image of European traditions. Craftspeople working during this time developed styles that would become acclaimed as distinctly American, both for their level of excellence in technique and the vernacular applications that emerged as they traveled throughout the country into new communities. This custom of making continued in the nineteenth century when Philadelphia was nationally regarded as “The Workshop of the World,” an industrial powerhouse known for the artisanal quality of its textile, locomotive, and material production. Though products were often produced en masse, the maker sensibility held fast. In the postwar era, the region’s crafts practitioners gained national prominence exploring the materiality of wood, clay, fiber, glass and metal, as evidenced by the unparalleled number of Philadelphians named as Fellows of the American Craft Council. More recently, Philadelphia has become one of America’s leading centers for the community-based Makers Movement, stoked by entrepreneurial, small-batch, artisanal production.

Today, Philadelphia’s talented population of craft artists and makers is complemented and fueled by a wealth of art and design schools, discipline-specific craft centers, independent galleries, dedicated private collectors, and significant museum holdings and exhibitions. The Philadelphia Museum of Art Contemporary Craft Show held each November has enhanced this reputation. Having just celebrated its 40th year, the PMA Craft Show stands out as the nation’s oldest museum fine craft show, and one of its most prestigious.

The Philadelphia community of craftspeople and makers has expanded dramatically in the past three decades, and yet this creative sector has lacked a citywide platform to showcase its historic, current, and future role as a national center for hand-made works. *CraftNOW Philadelphia* emerged in November 2015 to answer that need. A consortium of individuals, galleries, museums, universities, retailers and civic organizations coalesced to sponsor, present and market a series of programs, exhibitions and marketing materials both highlighting Philadelphia’s unparalleled craft and maker resources, and creating fresh opportunities for public engagement. This initiative, running concurrently with the PMA Craft Show, just completed its second annual series of events in Fall 2016 themed around the intersection of technology and craft, called “Analog-Digital.” (please visit www.craftnowphila.org)

The CraftNOW Consortium

The CraftNOW Consortium represents a growing coalition of over twenty leading institutions, art colleges, galleries and individuals in the City's craft and makers sector. In 2016, CraftNOW added several important collaborators including Fabric Workshop + Museum, Philadelphia's Magic Gardens and Wayne Art Center. CraftNOW continues to host events, collaboratively market Philadelphia's exceptional craft resources, and build a comprehensive online presence that connects artists, curators, collectors, educators and the general public. Through these connections, CraftNOW seeks to support Philadelphia's growing creative economy and reinforce the city's "civic brand" as one of the world's leading centers for craft and making in the 21st century.

Listed below are the organizations and individuals who helped plan, fund and execute CraftNOW's program in 2016.

Non-Profit Organizations

The Center for Art in Wood
The Clay Studio
The Fabric Workshop and Museum
Kimmel Center for the Performing Arts
Old City District
Philadelphia Art Alliance
Philadelphia Center for the Book
Philadelphia Museum of Art Craft Show
Philadelphia Museum of Art
 American Modern and Contemporary
 Crafts and Decorative Arts
Philadelphia Museum of Art Women's Committee
Philadelphia's Magic Gardens
Wayne Art Center

Colleges and Universities

Galleries at Moore, Moore College of Art & Design
Tyler School of Art, Temple University
The University of the Arts

Gallerists and Retailers

Moderne Gallery
Snyderman-Works Galleries
stadler-Kahn Gallery

Individuals and Other

Glenn Adamson, Craft Scholar
Bok, Maker Space in South Philadelphia
Andrew Dahlgren, Educator and Makers Advocate
Helen Drutt English, Craft Scholar
Bill Gehrman, En Route Marketing
Barbara Harberger, Art Consultant
Hilary Jay, Creative Consultant
Judith Tannenbaum, Curator

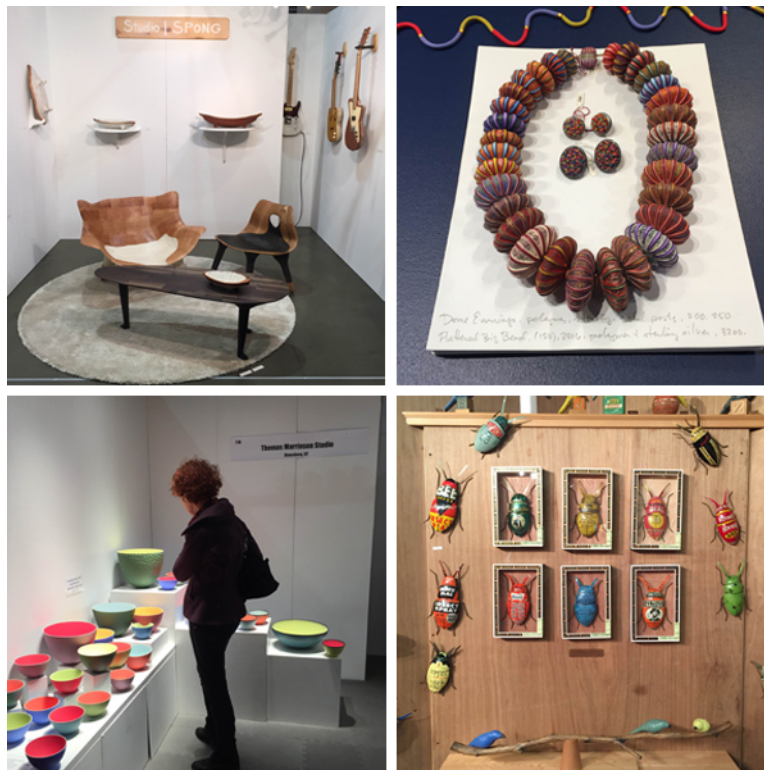
Clara Hollander, Co-Chair
David Seltzer, Co-Chair
Leila Cartier, Project Manager

Craft Starts Here

CraftNOW Philadelphia's activities are scheduled each year to coincide with the highly regarded PMA Craft Show, which last year was held November 10-13, 2016 at the Pennsylvania Convention Center and drew nearly 20,000 visitors. The PMA Craft Show was founded in 1977 and was the first retail craft show established and organized by a volunteer committee for the benefit of a non-profit institution. The PMA Craft Show is presented each November by the PMA's Women's Committee and the Craft Show Committee for the benefit of the Philadelphia Museum of Art.

A central objective of CraftNOW Philadelphia is to offer additional craft-related activities outside the walls of the Convention Center for these attendees to experience, prolonging their stay and generating economic activity. This spotlight on craft is designed to mutually assist both the PMA Craft Show and the City's many local craft organizations, galleries and artisans. Through collective marketing and exposure, CraftNOW emphasizes Philadelphia as a destination for craft collectors, makers, educators and cultural devotees locally, nationally and internationally.

Pictured below are installation views featuring furniture, jewelry, ceramics and mixed media from the PMA Craft Show in 2016.



2016 CraftNOW Program

CraftNOW sponsored, presented and marketed a stimulating portfolio of activities and programs in the Fall of 2016. The brochure included as **Exhibit A** to this report outlines the activities summarized below. Thousands of copies of the brochure along with copies of a postcard and poster were distributed to visitor centers, businesses, hotels, museums, galleries and educational institutions around the City. CraftNOW also launched a targeted online and social media campaign starting in September, and was featured in over two dozen articles reaching approximately 100,000 unique viewers in the region and around the world. Further information about these events and our collaborators has been made available at our website www.craftnowphila.org, which continues to receive hundreds of visitors weekly.

CraftNOW Keynote and Kickoff

CraftNOW sponsored the keynote lecture and kickoff reception on Friday, October 28, for the *Technicalities: Meaning in Methods* symposium jointly presented by The Center for Art in Wood and The Clay Studio, with weekend lectures and workshops at Tyler School of Art.

The keynote was delivered by Glenn Adamson, former Head of Research at the Victoria and Albert Museum, London, and previous Director of The Museum of Arts and Design, New York City. *Production Values: The Relevance of Technique in Contemporary Art and Design* was delivered at Christ Church in Old City to over 200 craftspeople, students, educators, collectors and enthusiasts.

Attendees were then invited to receptions at The Center for Art in Wood and The Clay Studio, where they could meet the speaker and see the respective exhibitions that inspired the theme of the symposium: *Wood, Revisited* and *Transference: Transferware in Contemporary Ceramics*. This collaboration between organizations is an example of the type of interdisciplinary programming CraftNOW promotes and the open dialogue it encourages at the consortium's periodic meetings.

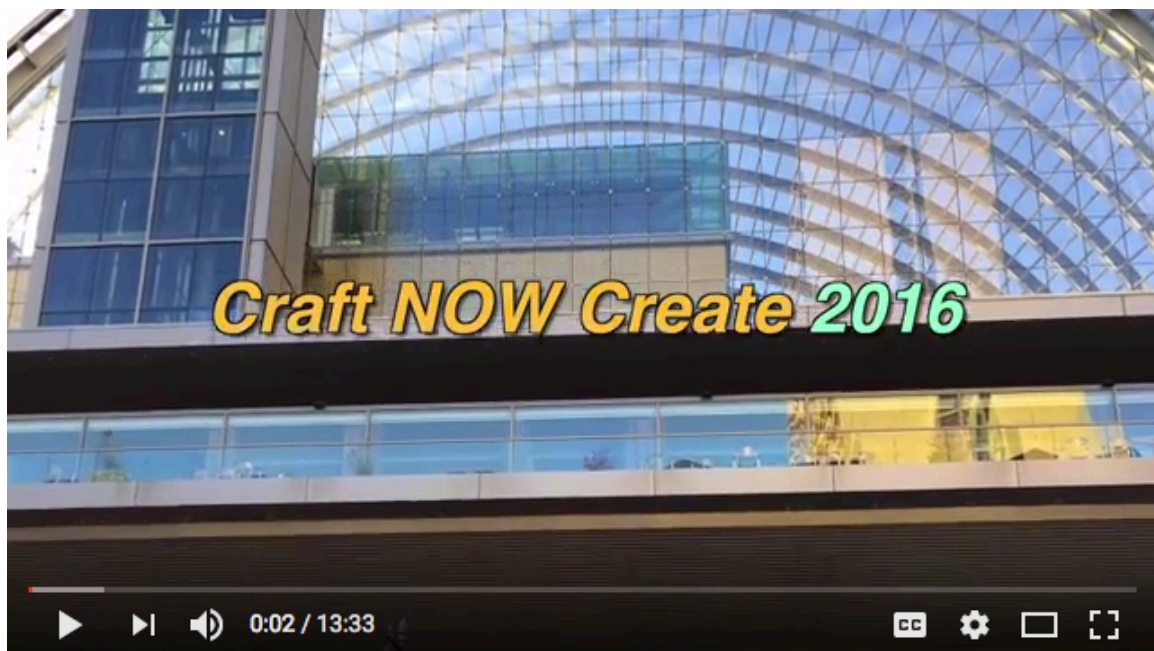


CraftNOW Create

The Second Annual CraftNOW *Create* was a family-friendly hands-on exploration of craft held on Saturday, November 12, 2016, hosted in Pennsylvania Hall in partnership with the Kimmel Center for the Performing Arts. Free and open to the public, CraftNOW *Create* saw an increased number of participating organizations and engaged visitors throughout the day from its 2015 inaugural program. Hands-on activities and demonstrations were presented by The Center for Art in Wood, The Clay Studio, Fabric Workshop + Museum, Philadelphia's Magic Gardens, Philadelphia Museum of Art, Tyler School of Art at Temple University, University of the Arts, and Wayne Art Center. Independent artists from these organizations as well as small businesses such as Knit Lab, owned and operated by Andrew Dahlgren, also contributed to and thus benefited from the event.

Fourteen different stations allowed visitors to participate in demonstrations ranging from digital clay printing and handloom creation to claymation and woodturning. University of the Arts students orchestrated a live costumed and musical performance that took place on the stage throughout the afternoon. In addition, CraftNOW *Create* offered live video feed from the University of the Arts' glass blowing studio next door as well as individual tours. An estimated 800 visitors representing all ages and backgrounds were made welcome as they toured the varying craft activities.

CraftNOW commissioned this video documentation of the event <https://youtu.be/DiOdPzkszq4>





Tyler School of Art demonstrated the process of “digitizing clay” through the use of a 3-D clay printer and by pulling clay forms out of molds that were digitally fabricated. Participants learned about open-source technology that was researched by their visiting artist using instructions and patterns found online.

The Philadelphia Museum of Art conducted an activity based on a textile from their East Asian Art collection. Participants were provided with fabric markers and canvas to learn the meditative practice of creating a mandala using geometric shapes and alternating colors.



CraftNOW Exhibitions

"Analog-Digital" was a multi-venue, concurrent series of exhibitions branded as part of CraftNOW. The thematic approach to the series encouraged visitors to explore intersections between craft and technology and to discover how craft continues to evolve in the twenty-first century. These exhibitions were open in the days and weeks surrounding the PMA Craft Show and were promoted by CraftNOW as complementing opportunities for residents and visitors to see high quality craft exhibitions throughout the City.

At the Center: Masters of American Craft

August 20, 2016 – July 30, 2017

Philadelphia Museum of Art

2600 Benjamin Franklin Parkway

This unique exhibition focused on the careers of Rudolf Staffel and David Ellsworth, two pioneers in the ceramic and wood artistic mediums respectively.

Ann Hamilton: habitus

September 17, 2016 – January 8, 2017

The Fabric Workshop + Museum

1214 Arch Street

Inspired by cloth making, *habitus* displays Ann Hamilton's selection of historical objects—including literary commonplace books, textile sample books, dolls, and needlework portfolios—borrowed from Philadelphia museums and public collections.

A Curious Nature

October 6 – December 4, 2016

Philadelphia Art Alliance

215 South 18th Street

This exhibit presents the work of Caitlin McCormack, Linda Cordell, Tasha Lewis, and Emily White, who employ craft-based processes and materials that examine the relationship between humans and nature, and between the artificial and the hand made.

Transference: Transferware in Contemporary Ceramics

October 7 – November 27, 2016

The Clay Studio

137-139 North 2nd Street

Transference explores how the combination of ceramics and transfer print technology enables the immediacy of printmaking to be joined with the enduring nature of fired clay.

Wood, Revisited

October 28, 2016 – April 8, 2017

The Center for Art in Wood

141 North 3rd Street

The Center for Art in Wood examines the important role technology has played in the work of wood artists over the past 20 years where design, mass production, and fine art meet.

A Well-Crafted First Friday

CraftNOW organized and promoted *A Well-Crafted First Friday* on November 4, 2016, with assistance from Old City District. Old City craft galleries, including The Center for Art in Wood, The Clay Studio, Moderne, Snyderman-Works Galleries, and Wexler Gallery were supplied CraftNOW postcards, which were redeemable for discounts and free offerings at participating boutiques, bars and restaurants. Thirteen area businesses partnered with CraftNOW for the promotional event and included 323 Arch Street Fashion Collective, Artist & Craftsman Supply, Betsy Ross House, ICI Macarons & Café, La Peg Brasserie @ Fringe Arts, Momo's Tree House, Philadelphia Independents, Panorama, Positano Coast, Sassafra, Select Shop 215, Serrano, and Tartes.

CraftNOW also participated and promoted a series of additional concurrent events and exhibitions sponsored by others last fall:

- Old City Fest, October 9
- The PMA Craft Show Preview Party, November 9
- The PMA Craft Show, November 10-13 (described above)
- Irvin Borowsky International Prize in Glass Arts at University of the Arts, November 10
- *Book Paper Scissors Day*, a celebration of book arts, printmaking and paper craft held at the Central Branch of the Free Library of Philadelphia on November 12
- *Craft Forms* and *Making Marks* opening receptions and curators' lectures at the Wayne Art Center, December 2 and 3



One of the many *Craft Forms* artists speaks to a large audience at Wayne Art Center's December 3 Curator's Lecture delivered by Stefano Catalani, Executive Director at Gage Academy of Art, Seattle, WA.

Financial Results

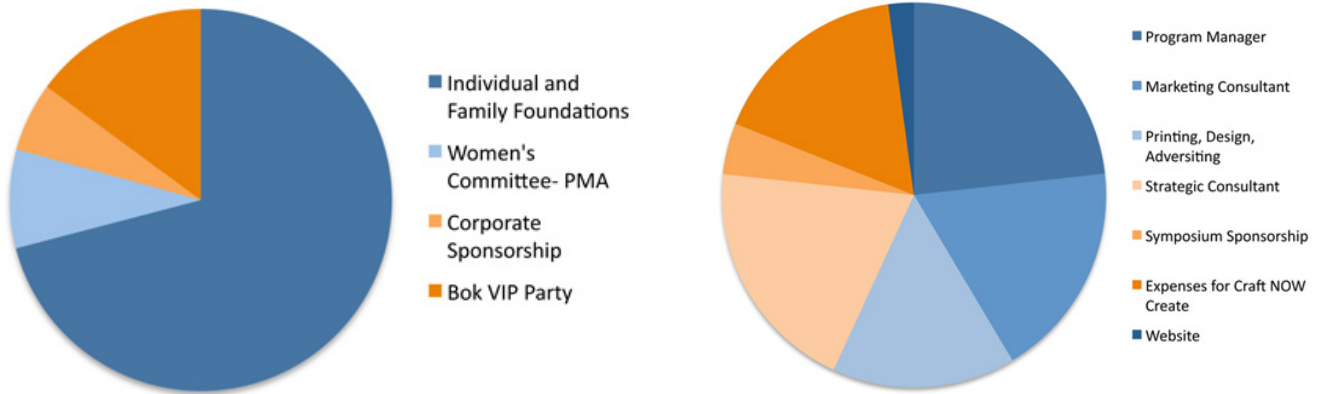
Listed here is an unaudited summary of revenues and expenditures for CraftNOW in 2016.

CraftNOW Philadelphia Financial Results from 2016*

BEGINNING BALANCE	\$8,705
REVENUES	
<i>Contributed</i>	
Individual and Family Foundations	\$ 42,500
Women's Committee- PMA	\$ 5,000
<i>Earned Marketing Revenues</i>	
Corporate Sponsorship	\$ 3,500
<i>Craft/Maker Event</i>	
Bok VIP Party and Raffle	\$ 8,920
Current Year Revenues	\$ 59,920
COMBINED STARTING BALANCE & REVENUES	\$ 68,625
EXPENSES	
<i>Payroll</i>	
Program Manager	\$ 14,024
<i>Outside Professional Fees</i>	
Marketing Consultant	\$ 11,000
Printing, Design, Advertising	\$ 9,318
Strategic Consultant	\$ 12,000
Symposium/Curatorial Honoraria	\$ 2,600
Expenses for Craft NOW Create	\$ 10,155
Website	\$ 1,290
TOTAL EXPENSES & OUTFLOWS	\$ 60,387
ENDING BALANCE	\$ 8,238

* Figures do not include the value of contributed services provided by CraftNOW's fiscal agent, The University of the Arts and other non-profit and for-profit institutions.

Revenues and Expenditures for CraftNOW in 2016



As an emerging organization, CraftNOW relies on generous individual and foundation contributions in order to fully realize its programming. The Philadelphia Museum of Art Women's Committee voted to grant \$5,000 for a second year, showing their partnership in our shared aim to raise the profile of craft in Philadelphia. Since CraftNOW is run primarily by a team of volunteers with one part-time staff person, the limited overhead costs allows funds to be directed almost exclusively to programming and marketing.

To further support its 2016 activities, CraftNOW hosted an unusual and highly entertaining fundraiser on Wednesday, September 28, 2016, at the recently opened Bok Building in South Philadelphia. This magnificent Art Deco former vocational-technical school is being repurposed into a community based maker's space. Tours of studio spaces and small businesses—which included glass artists, fashion design, woodworking, millinery, and jewelry artists—were followed by a cocktail reception on the rooftop bar with a spectacular view of Center City. This event helped raise nearly one quarter of our annual budget and was additionally supported through Corporate Sponsorship from BDDW, a furniture line based in Philadelphia. Craft-themed raffle items were generously provided by Arden and James, Edgewood Made, Knit Lab, and Stacey Lee Webber, which helped to raise additional funds at the event.

In mid-2016, CraftNOW retained Thaddeus Squire of Culture Works Greater Philadelphia to both evaluate the results of the 2015 and 2016 programmatic offerings and to assist in developing a strategic plan and business model for creating a sustainable organization for the coming years. Through consultations with CraftNOW consortium members and based on the results of a planning retreat held in December, 2016, CraftNOW has decided to pursue the business model of a **collective leveraged marketing platform**. Under this strategy, CraftNOW will collaborate with partners to package a series of activities concentrated around the time of the PMA Craft Show. Generating a “festival” of programming and combining the resources of area organizations will support the production of a robust marketing campaign. This strategy marks the centerpiece of CraftNOW's efforts to support the craft and maker ecology of the region.

Plans for 2017

CraftNOW hired Leila Cartier as Project Manager in 2016. An artist herself who recently returned to Philadelphia, Leila also brings half a dozen years' experience as curator of an art museum presenting the arts to under-served audiences in rural Virginia. She is a graduate of Moore College of Art & Design, represented by Schmidt Dean Gallery located at 1719 Chestnut Street and occupies a studio in South Philadelphia's 1241 Carpenter Studios + Project Space. Cartier will continue working with CraftNOW Philadelphia as Executive Director to provide consistency of leadership and vision as we transition into 2017. Her primary objective early in the year is exploring new sources of foundation support, additional institutional collaborations and exciting programmatic offerings.

As presently constituted, CraftNOW is an unincorporated association, using The University of the Arts as its Fiscal Sponsor. To support future growth and enhance its governance, CraftNOW is in the process of adopting association bylaws and forming a Board of Overseers to replace the previous Steering Committee. The Board will be responsible for adopting an annual budget and making decisions about programmatic offerings. In place of the previous consortium participants, CraftNOW plans to formally establish an Advisory Committee consisting of individuals and organizations in the broader craft and makers community, to provide guidance on programming and other activities. CraftNOW is delighted that The University of the Arts—one of the City's leading institutions in arts education and material studies—has agreed to continue serving as its fiscal sponsor in 2017.

The CraftNOW consortium believes that there are multiple ways this organization benefits the City of Philadelphia. CraftNOW galvanizes Philadelphia as a center for high quality craft and making to:

- Animate Philadelphia, attract tourism, and generate economic activity
- Expand the marketplace to advance the economic wellbeing of artists and galleries
- Support collaboration across sectors of the craft and makers community
- Nurture the development of the next generation of craft artists/makers
- Foster creative expression by a broad cross-section of society

CraftNOW continues to meet with its consortium of leaders from the craft community on a periodic basis and is organizing a series of programs to once again complement the PMA Craft Show, which takes place this year November 9-12, 2017. In the days surrounding the Craft Show, CraftNOW will build on its success from the last two years and continue to highlight artisans and makers in the city through; our Third Annual CraftNOW *Create* at the Kimmel Center; a symposium in conjunction with The Clay Studio, The Center for Art in Wood and The Galleries at Moore; and a community celebration similar to last year's Well-Crafted First Friday to be held on November 3. Letters will be sent to additional organizations throughout the city as a call for participation in order to widen our base and build a robust campaign showcasing the depth and breadth of talent in our area. CraftNOW will continue to engage a Marketing Consultant to ensure these programs reach the largest possible audience.

Conclusion

CraftNOW organizers believe in the possibilities of craft as a community convener in a divisive age. People from all walks of life, all ethnicities, age groups, neighborhoods and political viewpoints can and do participate in making things. Working with materials not only connects us with the pleasure of “hands-on” activity; it also can promote social cohesion and foster a culture of understanding. Craft spans a wide experiential range, covering such fields as fine art, functional and material objects, design and making, and small-scale manufacturing. Artisanal craft arguably could cover everything from great restaurants to great Mummer’s costumes to great auto repair shops.

The goal for an initiative like CraftNOW is to establish a broader base than just professional craft artists, gallerists and collectors, so that it is seen as inclusive. In addition to its beneficial social function, craft can promote civic pride and boost industry throughout the city. The broad dimensions craft can offer provide enough room to accommodate and appeal to everybody.

CraftNOW Philadelphia has completed two successful seasons of pilot programs aimed at shining a spotlight on the richness of Philadelphia’s craft and maker community. In its first seasons, a number of programs were piloted, ranging from panels and education programs, to exhibitions and fairs. Building off of CraftNOW’s intention to build audience, support, and recognition for the craft and maker community of our region, CraftNOW will continue hosting an annual, open call, but curated ***festival-exhibition*** featuring theme-based programming from the region’s institutions and individual artist and maker community. The basic goals of this annual event are as follows:

- Provide a common objective for bringing together multiple organizations in the creative fields of craft and making to collaborate in showcasing Greater Philadelphia’s creative legacy and ongoing leadership role within the sector.
- Celebrate Philadelphia’s economic and social history of skilled individual craft artisans, and expand educational and vocational opportunities for Philadelphia students.
- Incubate an outreach plan that would expand educational and employment opportunities in the sector for individuals—with particular attention paid to those from disadvantaged and minority populations within the city.

The sponsors of CraftNOW are very appreciative of the support granted by our donors in helping us launch this important initiative.



CRAFT NOW KEYNOTE & KICKOFF
Friday, October 28, 5:30 PM
 Lecture: Christ Church, 20 N. American Street
 Receptions: 7 - 8:30 pm at The Clay Studio, 137-139 N. 2nd Street
 and The Center for Art in Wood, 141 N. 3rd Street

Glenn Adamson delivers the keynote lecture entitled *Production Values: The Relevance of Technique in Contemporary Art and Design*. Technicalities Symposium follows October 29 and 30, featuring speakers and artists who will be represented in the exhibitions *Transference: Transferware in Contemporary Ceramics and Wood, Revisited*. The keynote and receptions are free and open to the public. Signed copies of Glenn Adamson's book *Art in the Making* will be available at the Center. The keynote requires pre-registration. Register at www.centerforartinwood.org.

CRAFT NOW CREATE **FAMILY-FRIENDLY**

Saturday, November 12, 11 am - 4 pm
 Kimmel Center for the Performing Arts, Broad & Spruce Streets

Join Craft NOW for a day filled with hands-on explorations of craft. Craft NOW Create features family-friendly and free demonstrations by The Center for Art in Wood, The Clay Studio, the Philadelphia Art Alliance, the Philadelphia Museum of Art, Tyler School of Art, the University of the Arts and others.

- Watch demonstrations of wood turning, jewelry making, 3D ceramic printing, machine knitting and more
- Create and animate clay characters using the art of stop motion
- Learn how to create patterned designs on fabric using shape stencils
- Design wearable souvenir buttons

Visit craftnowphila.org for a schedule of activities



Craft NOW Philadelphia serves as a citywide platform that celebrates Philadelphia's unparalleled craft and artisanal legacy, showcases the area's many outstanding craft artists, galleries and other institutions, and highlights the City's continuing role in defining the future of craft and making. Craft NOW promotes and sponsors a series of exhibitions, public demonstrations, and educational programs that are designed to animate the City, grow the local creative economy, and offer opportunities for the public to engage directly with the art of craft.

Craft NOW Consortium

The Center for Art in Wood The Clay Studio The Fabric Workshop and Museum The Galleries at Moore Kimmel Center for the Performing Arts Moderne Gallery Old City District Philadelphia Art Alliance Philadelphia Center for the Book Philadelphia Museum of Art Craft Show Philadelphia Museum of Art	Philadelphia's Magic Gardens Snyderman-Works Galleries Stadler-Kahn Gallery Tyler School of Art, Temple University The University of the Arts Wayne Art Center Sharon Church Christina P. Day Barbara Harberger Hilary Jay Judith Tannenbaum Clara Hollander, Co-Chair David Seltzer, Co-Chair
--	--

Support for 2016 Craft NOW programs provided by





The Women's Committee of the Philadelphia Museum of Art and many generous individuals

CRAFT NOW PHILADELPHIA

Exhibitions, Special Events, Awards & the return of Craft NOW Create!

OCTOBER 28 through DECEMBER 3, 2016

CRAFTNOWPHILA.ORG

#CRAFTNOWPHIL

FEATURED EVENTS

A WELL-CRAFTED OLD CITY FIRST FRIDAY

Friday, November 4, 5 pm – 9 pm

See Philadelphia's galleries showcasing contemporary craft in all media. Explore craft exhibitions at The Center for Art in Wood, The Clay Studio, Snyderman-Works Galleries, Moderne Gallery and more. Follow @CRAFTNOWPHIL on social media to learn about special promotions at Old City retailers for First Friday.

4TH ANNUAL IRVIN BOROWSKY INTERNATIONAL PRIZE IN GLASS ARTS LECTURE AND RECEPTION

Thursday, November 10, 5:30 pm

The University of the Arts, Hamilton Hall | 320 S. Broad Street
The Prize, which carries a \$5,000 award and travel stipend, recognizes an artist whose work is conceptually daring, exemplifies technical skill and innovation, and advances the field of contemporary glass. The 2016 honoree is award-winning Japanese glass artist and educator Rui Sasaki. Lecture begins at 5:30 pm, with a reception to follow. Admission is FREE; registration required. To register, please contact Emily Bilodeau at ebilodeau@uarts.edu.

THE PHILADELPHIA MUSEUM OF ART CONTEMPORARY CRAFT SHOW

November 10 - 13, Thursday, 11 am – 9 pm; Friday, 11 am – 7 pm; Saturday, 10 am – 6 pm; Sunday, 10 am – 5 pm

Pennsylvania Convention Center | pmcraftshow.org

This premier show and sale of contemporary craft includes 195 of the finest and most dynamic craft artists in the United States, selected from more than 1,000 applicants. All work is for sale.

CRAFT FORMS 2016 AND MAKING MARKS LECTURES

Saturday, December 3, 1 pm - 4 pm

Wayne Art Center | 413 Maplewood Avenue, Wayne, PA

Stefano Catalani (Executive Director of Gage Academy of Art and former Director of Art, Craft, & Design at Bellevue Arts Museum) and Mi-Kyoung Lee (Associate Professor, Director of Craft + Material Studies Program and Coordinator of Fibers and Textile Studies at The University of the Arts) and selected craft artists from around the United States and abroad discuss contemporary craft techniques in ceramics, wood, fiber, glass, mixed medium and 3-D printing.

FEATURED EXHIBITIONS: ANALOG ↔ DIGITAL

Exploring Intersections in Craft and Technology to discover how craft continues to evolve in the 21st century.

AT THE CENTER: MASTERS OF AMERICAN CRAFT

August 20, 2016 - July 30, 2017

Philadelphia Museum of Art
2600 Benjamin Franklin Parkway

This unique exhibition focuses on the careers of Rudolf Staffel and David Ellsworth, two pioneers in the ceramic and wood artistic mediums respectively.



TRANSFERENCE: TRANSFERWARE IN CONTEMPORARY CERAMICS

October 7 -

November 27, 2016

The Clay Studio
137-139 N. 2nd Street

Transference explores how the combination of ceramics and transfer print technology enables the immediacy of printmaking to be joined with the enduring nature of fired clay.



ANN HAMILTON: HABITUS

September 17, 2016 -

January 8, 2017

The Fabric Workshop and Museum
1214 Arch Street

Inspired by cloth making, *habitus* displays Hamilton's selection of historical objects — including literary commonplace books, textile sample books, dolls, and needlework portfolios — borrowed from Philadelphia museums and public collections.



WOOD, REVISITED

October 28, 2016 -

April 8, 2017

The Center for Art in Wood
141 N. 3rd Street

The Center for Art in Wood examines the important role technology has played in the work of wood artists over the past 20 years where design, mass production, and fine art meet. On Saturday, November 12th, 6 - 8 pm, Jakob Weissfogel will be awarded the Bob Stocksdale International Excellence in Wood Award. Sneak preview VIP tickets of the Weissfogel exhibition are available at www.centerforartinwood.org.

A CURIOUS NATURE

October 6 - December 4, 2016

Philadelphia Art Alliance
251 S. 18th Street

This exhibit presents the work of Caitlin McCormack, Linda Cordell, Tasha Lewis, and Emily White, who employ craft-based processes and materials that examine the relationship between humans and nature, and between the artificial and the hand made.



CRAFTNOWPHILA.ORG #CRAFTNOWPHIL

Photo Credits (Starting from At the Center of American Craft): Line Ascending #5, #10, #11, from the Emergence Series; 2013-15, by David Ellsworth; Ann Hamilton, Doll, 1800-1820. Courtesy of Winterthur Museum, Garden & Library. Gift of Katherine Gubagan Michael H. de Pont, and Christopher T. du Pont in memory of A. Felix de Pont, Jr., 1999; 19.1, Tasha Lewis, Fox, 2013; cyanotype on recycled fabric, glass panel, mixed media; Paul Scott, Cumberland Blues(s), Courtesy Fernin Gallery; A. White Workshop, Photo: Taly Coulson