

CraftBLAST!

LIVE EVENT & ONLINE AUCTION

Auction September 15–28
with Event September 28

MODERNE GALLERY

2220 East Allegheny Ave, 2nd Fl
Witte Street Entrance
Philadelphia, PA 19134

Buy Tickets for CraftBLAST!
CraftNOW2022.GiveSmart.com

Proceeds support CraftNOW

CraftNOW Philadelphia unites the leading institutions and artists of Philadelphia's community in a celebration of the city's rich legacy, internationally-recognized contemporary scene, and its important role as an incubator for arts based in wood, clay, fiber, metal, and glass. Through both creating and spotlighting events around Philadelphia, CraftNOW invites locals and visitors alike to explore Philadelphia's innovations in the world of handmade.

This auction brings together some of Philadelphia's most innovative artists and important institutions. Everyone has been invited to retain 50% of the winning bid collected for their contribution. Many have donated their work in full to further the work and mission of CraftNOW.

We hope you enjoy learning more about these artists and craft in Philadelphia.



100. *Madrone Burl Vessel*

Artist: Michael Peterson

Dimensions: 5" x 4.5" x 3"

Materials: Madrone-Burl Wood

Donated by The Center for Art in Wood

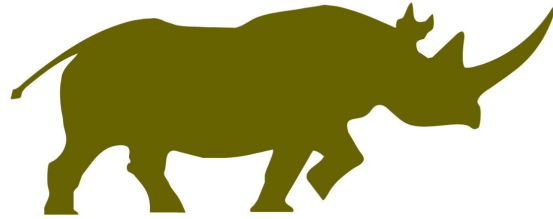
Fair Market Value: \$550

Starting Bid: \$200

Michael Peterson created this hollow form madrone-burl turned-vessel in 1987. Michael Peterson was born in 1952 in Texas and lives with his wife, Jean, on Lopez Island.

Introduced to wood in 1975, Michael's work continues to explore the potential of process and material. Central to the work is evoking a sense of naturalness, landscape, object and coastal influence.

[Click here to view item on auction website.](#)



ONGAVA

GAME RESERVE

101. 5 days/ 4 Nights in Namibia

Donated by The Skylight Foundation

Fair Market Value: \$8,000

Starting Bid: \$2,000

The winner of this trip will travel to Namibia for an unforgettable 5 days and 4 nights on safari in the exclusive Ongava Game Reserve (www.ongava.com) located next to Etosha National Park. The winning bidder will have the choice of staying at Ongava Tented Camp or at Ongava Lodge. A combination of both properties is also possible.

Namibia has become a most sought-after safari destinations. Activities include game drives in open jeeps, guided hikes and walks giving you the unique opportunity to see resident elephants, cheetahs, lions, and the unique resident white and black rhinos. Spend time visiting the Ongava Research Center which is sponsored in part by the Philadelphia Zoo.

Ongava has been listed on the Conde Nast Traveler Gold Reserve List. Bid now for this luxury trip and create memories that will last forever.

[Click here to view item on auction website.](#)



102. *Large Volcanic Glazed Vessel*

Artist: Estelle Halper

Dimensions: 12.5" x 9"

Materials: Stoneware, glaze, sgraffito
decoration

Donated by Moderne Gallery, contributor will
receive 50% of winning bid.

Fair Market Value: \$6,500

Starting Bid: \$3,500

Estelle Halper (1918–1980) was an acclaimed potter born in White Plains, New York. She initially took ceramic classes at Greenwich House Pottery in Manhattan in the early 1940's.. She was learning to mix elements for glazes, taking courses with Peter Volkous, James Crumrine, and Ilsa Rothmer. She is best known for her volcanic turquoise and blue glazes, these were developed while experimenting in her studio in the early 1950's. Her work has been featured in many museums across the country.

[Click here to view item on auction website.](#)



103. Sterling Silver Cufflinks

Artist: CARTrageous Jewelry

Dimensions: .51" x .6" x .49"

Materials: Sterling silver and 2mm diamond wheels

Donated by Deanna McLaughlin at CARTrageous Jewelry, contributor will receive 50% of winning bid.

Fair Market Value: \$240

Starting Bid: \$190

Deanna McLaughlin, founder of **CARTrageous Jewelry**, began exhibiting her work in 1986. She has won numerous awards with her artwork and has been granted residency and exhibition opportunities both Nationally and Internationally. Experiencing people from other places and cultures has greatly influenced her approach to looking at life with an ever-fresh perspective.

[Click here to view item on auction website.](#)



104. *Philadelphia Centerpiece*

Artist: Keun Ho Peter Park

Dimensions: 17" x 9" x 2.25"

Materials: Maple wood serveware and milk paint

Donated by Commonweal Gallery

Fair Market Value: \$325

Starting Bid: \$100

Keunho Peter Park is a woodworking artist and studio furniture maker. He creates functional objects whose organic forms are inspired by nature and the beauty of the human body.

[Click here to view item on auction website.](#)

THE
46TH
ANNUAL
PHILADELPHIA
MUSEUM
OF ART

CONTEMPORARY
CRAFT
SHOW

November 11-13

Preview Party **November 10**

105. General Admission PMA Craft Show Tickets

Donated by the Philadelphia Museum of Art

Fair Market Value: \$240

Starting Bid: \$190

Show Dates and Times:

- Friday, 11/11/22 from 11am-7pm
- Saturday, 11/12/22 from 10am-6pm
- Sunday, 11/13/22 from 10am-5pm

Selected by an esteemed panel of jurors, the 2022 Craft Show features 195 of the finest craft artists in the United States at the Pennsylvania Convention Center. The 195 talented artists represent a vast array of work in 13 diverse categories of art created by hand. In addition, we welcome select student artists from local universities to exhibit and share their work with the public.

[Click here to view item on auction website.](#)



106. *Transience*

Artist: Jen Blazina

Dimensions: 1.5" x 2" x 1"

Materials: Decorative cast glass and silver chain

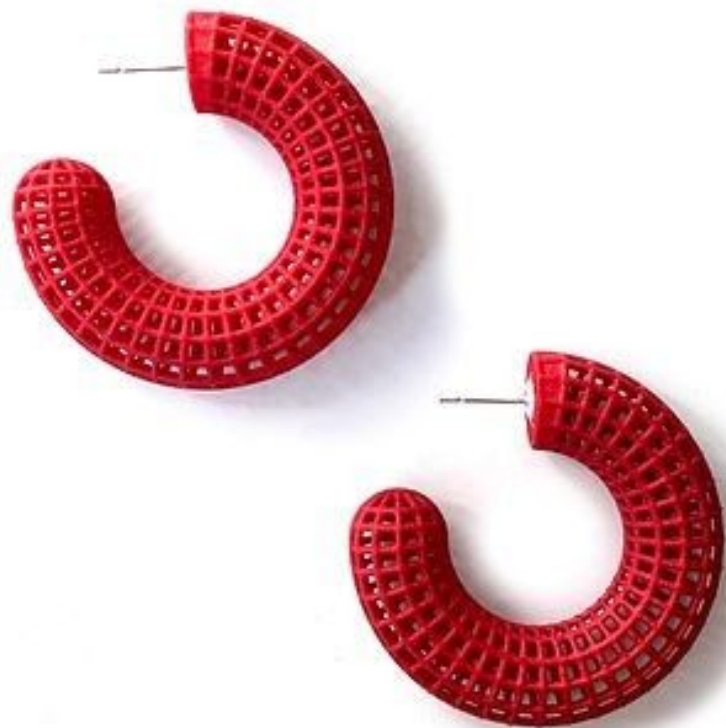
Donated by Jen Blazina, contributor will receive 50% of winning bid.

Fair Market Value: \$500

Starting Bid: \$250

Jen Blazina is a sculptor and printmaker who uses glass as her primary medium. She is a working artist and a professor at Drexel University. Blazina's work is in collections such as the Neuberger Museum of Art, The Imagine Museum, The Cranbrook Museum of Art, and the Corning Museum of Glass. She has been awarded multiple residencies: the Corning Artist in Residency, Corning Museum of Glass; GAPP Residency at Toledo Museum of Art; Bezalel Art and Design Academy in Jerusalem, Israel; and CGCA. Awards include: Bessie and Louis Stein Fellowship; Independence Foundation; and the National Endowment for the Arts.

[Click here to view item on auction website.](#)



107. *Grid Hoops*

Artist: Maria Eife

Dimensions: 1.6"

Materials: 3D printed nylon and sterling silver earrings

Donated by Maria Eife Jewelry

Fair Market Value: \$110

Starting Bid: \$40

Maria Eife is a Philadelphia-based jewelry artist. She received a BFA in Metals/Jewelry/CAD-CAM from Tyler School of Art in 2000. She has since been building a practice rooted in both digital and traditional craft. Maria has exhibited across the United States and in Europe, including the Smithsonian Craft Show, Sieraad Art Fair and Jewelers' Werk Galerie. She co-founded JV Collective in 2016 and the group has exhibited at Munich Jewelry Week, New York City Jewelry Week and at the Baltimore Jewelry Center. In 2017 she won the Excellence in Jewelry Prize at the Philadelphia Museum of Art Craft Show.

[Click here to view item on auction website.](#)



108. *Bird*

Artist: Kimberly Camp

Dimensions: 23"

Materials: Mixed media

Donated by Galerie Marie, contributor will receive 50% of winning bid.

Fair Market Value: \$500

Starting Bid: \$250

Kimberly Camp's paintings and dolls have appeared in over 100 solo and group exhibitions. She is the recipient of two NEA fellowships and the Kellogg National Leadership Program Fellowship. Camp served for 25 years as museum CEO. People can see her work and that of over 200 international artists at Galerie Marie. She has been featured in Essence, Nouvel Objet, FiberArts, National Geographic World, the Village Voice and Smithsonian. Camp received the 2020 Award of Excellence: Art Makes Us Human from the American Craft Council, and the Gold Medal Best of Show at the 2021 Peter's Valley Craft Fair.

[Click here to view item on auction website.](#)



109. Disruptive Candlesticks (Set of 6)

Artist: Rebecca Chapell

Dimensions: 10" x 5" ea.

Materials: Terracotta, glaze, and luster

Donated by Commonweal Gallery

Fair Market Value: \$240

Starting Bid: \$80

Rebecca Chappell's candlesticks were inspired by disruptive patterning, such as the stripes on a zebra or the spots of a cheetah. A particular type of camouflage that has the ability to obliterate mass and disturb an object's profile in order to confuse either predator or prey. Rebecca Chappell is a ceramicist whose works investigate the relationship between form and surface design as covert instruments for carrying messages.

[Click here to view item on auction website.](#)



110. *Untitled*, 2006

Artist: Doug Haslam

Dimensions: 7.75" x 5.75" x 6"

Materials: Wood, paint, and mirrors

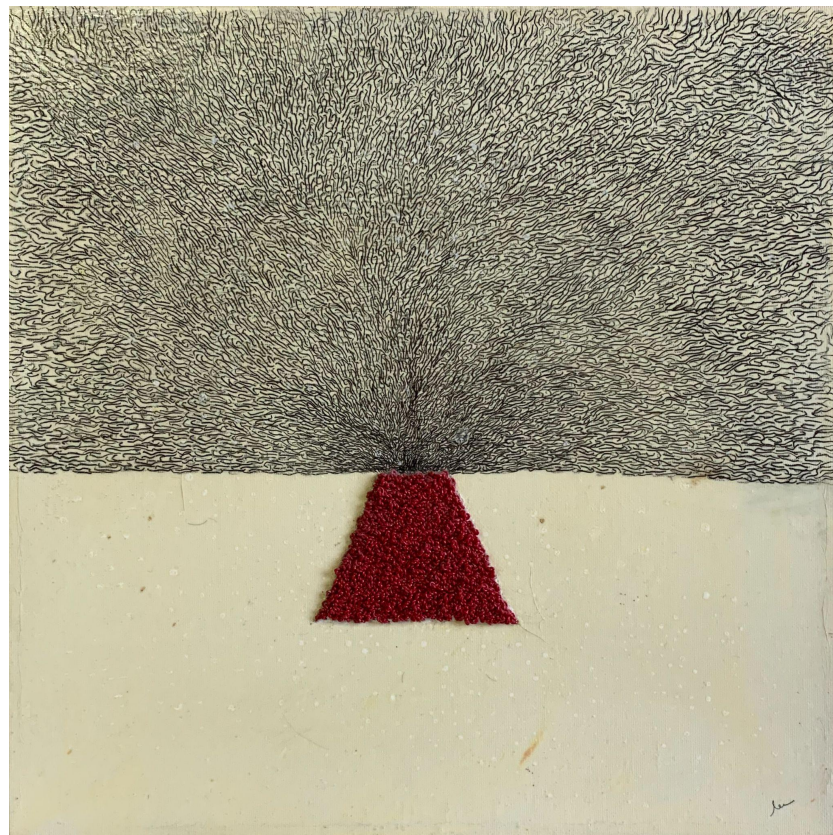
Donated by Tina and Albert LeCoff

Fair Market Value: \$500

Starting Bid: \$50

Doug Haslam works primarily in wood with inspirations from nature, architecture and culture. Haslam has widely exhibited his work and is represented in private and public collections. Grants and awards and participation on juries include the Alberta Foundation of the Arts (AFA) and the Canada Council. Public commissions include AFA, the City of Calgary, the Government of Alberta and others.

[Click here to view item on auction website.](#)



111. *Untitled*

Artist: Mi-Kyoung Lee

Dimensions: 12' x 12' x 2.5"

Materials: Plastic thread, pencil, and ink pen on canvas

Donated by Mi-Kyoung Lee, contributor will receive 50% of winning bid.

Fair Market Value: \$500

Starting Bid: \$250

Mi-Kyoung Lee is Director of School of Art, Design and Art History, College of Visual and Performing Art in James Madison University as well as a fiber artist currently based in Philadelphia. Her work focuses on the ritual and repetitive process of art making and the relationship between tool and material, image and content. Her work has been featured in solo and group exhibitions at many locations, including internationally. She was included in the 10th International Lausanne Beijing Fiber Art Biennale and 8th Beijing International Visual Art Biennale among others.

[Click here to view item on auction website.](#)



112. *Bittersweet* 01

Artist: Jack Larimore

Dimensions: 12" x 10" x 10"

Materials: Tree burl, bronze, and dried
passionfruit

Donated by Jack Larimore

Fair Market Value: \$2,000

Starting Bid: \$500

Jack Larimore grew up on a farm in Leelanau County Michigan. While most of his early practice as a maker was based in Philadelphia, he now lives and works on a farm in the Delaware Bay Shore region of South Jersey. As a maker, Jack favors elemental materials that make specific contributions to the process and the content of the work. He has held faculty positions at a number of universities, exhibited nationally and internationally and his work is included in many private and public collections.

[Click here to view item on auction website.](#)



113. *Bracelet*

Artist: Tara Locklear

Dimensions: 9" x 1.5"

Materials: Repurposed skateboard decks

Donated by Gravers Lane Gallery

Fair Market Value: \$350

Starting Bid: \$100

Tara Locklear's jewelry creates an immediate focus for the viewer with its inspiration from materials in industrial and social culture. Driven by her love of the color and graphic qualities these materials provide, exploring and forming them are at the heart of her practice. From sheet steel, cast cement to recycled skateboards, all of her material choices have inherent beauty and strength beyond their functioning identity. Tara's focus is to create finely crafted jewelry that empowers the wearer individually and to bring a refreshing point of view to contemporary jewelry.

[Click here to view item on auction website.](#)



114. Round Cutting Board with Handle

Artist: Edgewood Made

Dimensions: 21" x 15" x 1"

Materials: Cherry wood

Donated by Edgewood Made

Fair Market Value: \$180

Starting Bid: \$90

Edgewood Made is a design and fabrication company based out of Philadelphia, PA. It was founded by David Short and George Dubinsky in 2013 with the goal to design for every aspect of the home. Our products and services include our own brand of furniture, home goods and custom interiors as well as providing design and fabrication services to architects and interior designers.

[Click here to view item on auction website.](#)

NEXTFAB

115. NextFab Standard Membership

Donated by NextFab

Fair Market Value: \$657

Starting Bid: \$300

3-Month Standard Membership at NextFab
Marketspace. Includes unlimited days at all
three of their locations.

NextFab is a network of collaborative makerspaces for creators of any skill level or interest. Here we provide access to machinery, education, membership, community, events, and professional services for anything you want to fabricate. By combining digital technology with traditional tools, we're finding cutting-edge ways to make things, solve problems, and learn by doing.

[Click here to view item on auction website.](#)



116. *Summer Punch Set*

Artist: Remark Glass

Dimensions: Pitcher - 10" x 4" x 4", Glasses - 3.5" x 3.5" x 3.5"

Materials: Glass from recycled wine and liquor bottles

Donated by Remark Glass

Fair Market Value: \$105

Starting Bid: \$75

By creating small batch home accessories from post-consumer bottle glass, the **Remark Glass** team aims to build a more sustainable artform and manufacturing practice that simultaneously reduces glass waste on a local level.

[Click here to view item on auction website.](#)



117. *Untitled, circa 1986*

Artist: M. Dale Chase

Dimensions: 3.5" x 3.00625"

Materials: African Blackwood

Donated by Tina and Albert LeCoff, Dale Chase Bequest, contributor will receive 50% of winning bid.

Fair Market Value: \$650

Starting Bid: \$50

M. Dale Chase took to ornamental turning after 32 years as a vascular surgeon.

Ornamental turning utilizes Holtzapffel and Rose Engine lathes developed in England during the 1800's. Shaped metal cutters are oriented to cut patterns into wood. Chase first experimented with a 150 year-old Holtzapffel lathe, then transitioned to using the Rose Engine lathe. From early boxes patterned on the exterior, his focus shifted to simple forms with interior patterns.

[Click here to view item on auction website.](#)



118. Five Pysanky Eggs

Artist: Zach Kapeluck

Dimensions: 2.5" x 1.5"

Materials: Eggshell and dye

Donated by Helen Drutt

Fair Market Value: \$200

Starting Bid: \$100

Zachary Kapeluck was born in 1991 in Pittsburgh, PA where he spent his most formative years immersed in the cultural traditions of his Ukrainian ancestors. He was also introduced to many other Ukrainian arts as a child, one of them being the creation of pysanky, wax-resist decorated eggs. His grandmother was instrumental in his early pysanky education. In recent years Zachary has taken to creating pysanky at his home in South Philly, making eggs as gifts as well as a therapeutic past time that grounds him in his heritage.

[Click here to view item on auction website.](#)



119. One Week at Villa Regnalla

Donated by The Skylight Foundation

Fair Market Value: \$10,000

Starting Bid: \$2,000

Enjoy a unique opportunity to spend a fabulous week at Villa Regnalla in Pietrasanta, Tuscany, Italy. Accommodations include 5 bedrooms and 5 baths and sleeps 10 guests. Each suite includes a bedroom (some two), bathroom finished in Carrara marble, and a living room with fireplace.

Immerse yourself in history while enjoying modern comforts and amenities such as satellite TV, WiFi, air conditioning and heating. The villa's grounds include a gorgeous garden, tennis court, swimming pool with two showers and relaxing gazebos.

The villa is located near the historical and artistic town of Pietrasanta, just a 5-minute bike ride from the gold beach of Marina di Pietrasanta, and a 10-minute ride from the town center of Forte dei Marmi. Villa Regnalla is 30 minutes from the airport at Pisa and a 45-minute car ride from Florence. Airfare not included.

[Click here to view item on auction website.](#)



120. *Puzzled in Mellow Green*

Artist: Marian Robinson

Dimensions: ~17" width

Materials: Cardboard, ceramic beads, resin buttons, and ribbon

Donated by Wire2wear, Marian Robinson

Fair Market Value: \$220

Starting Bid: \$125

"My goal in creating craft jewelry is to find pleasure in creating and to bring pleasure to the woman who enjoys wearing one of my pieces. I like the challenge of seeing what I can do with off-beat , found or repurposed objects that so frequently serve as inspiration.

Each necklace is one-of-a-kind, and hand crafted. My work is made for a woman who is comfortable with herself, happy with attention, open to adventure, and delighted by the unexpected. Just like the piece she selects, she's one-of-a-kind!"

-Marian Robinson

[Click here to view item on auction website.](#)



121. *Bloom Planters (Set of 3)*

Artist: Sean Gerstley

Dimensions: 5.5" x 5.5"

Materials: Terracotta and glaze

Donated by Commonweal Gallery

Fair Market Value: \$375

Starting Bid: \$100

These ceramic Bloom Planters scalloped lip bursts outward, emphasizing (and perhaps encouraging) a prosperous planting season. **Sean Gerstley** is a ceramicist who designs interior furnishings and practical accessories which emphasize the use of handwork in their construction.

[Click here to view item on auction website.](#)



122. Shell - Wall Sconce

Artist: Aaron Harel

Dimensions: 14" x 14"

Materials: Various local and exotic drum shell fragments, lighting fixture, and LED bulb

Donated by A.J. ZONE Designs, contributor will receive 50% of winning bid.

Fair Market Value: \$500

Starting Bid: \$350

"I meticulously mill and arrange natural wood shell sections to create textural landscapes that evoke soothing moods, tranquil inspiration, and a feeling of warmth from natural wood grain displays. My latest work emerges with experiments in lighting, exploring how not only wired light, but also natural light moves through the deeply textured pieces."

-Aaron Harel

[Click here to view item on auction website.](#)



123. *John Wind x Leila Cartier Collection*

Artists: John Wind and Leila Cartier

- Bag - 7" x 10" with 42" crossbody chain, Nappa leather, suede lining, and metal hardware
- Scarf - 34" x 70", silk
- Earrings: 1.25" x 1.25" x 1.25", resin, gold-plated brass, and Austrian crystals

Donated by John Wind Jewelry, Leila Cartier, and InLiquid

Fair Market Value: \$425

Starting Bid: \$175

A bag, scarf and earrings from an exclusive collaboration between Philadelphia artists John Wind and Leila Cartier. Cartier is known for her collages using hand-cut images of jewelry found in magazines. In these pieces, her art has been translated with accessory designer Wind into pieces that whimsically explore questions of materiality, beauty and value, and are at the heart of their artistic dialogue. The collection was produced by InLiquid Art + Design.

[Click here to view item on auction website.](#)



124. Red/White Bowl

Artist: Carol Klein

Dimensions: 13" x 7"

Materials: Porcelain, glass fiber, and ceramic glaze

Donated by C.K. Ceramics

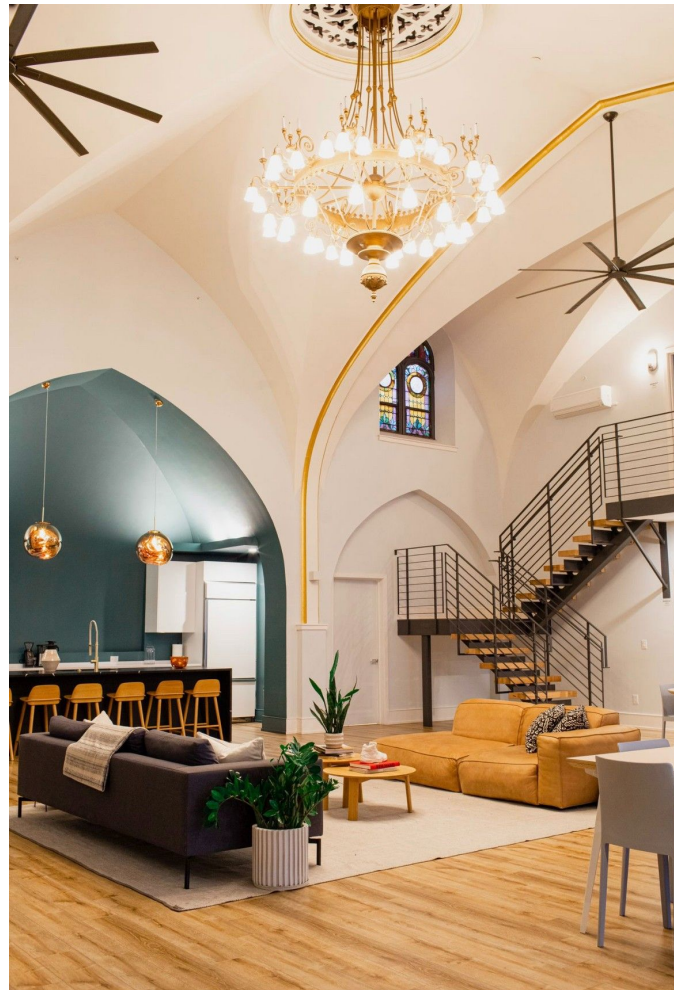
Fair Market Value: \$350

Starting Bid: \$100

“My goal is to capture the suppleness of textiles and the formality of porcelain. I saturate various weaves of glass textile, sometimes coarse and sometimes fine, with porcelain to create vessels that are remarkably thin, strong and lightweight. Each vessel is individually formed, and then fired until the glass fiber and the porcelain fuse.”

-Carol Klein

[Click here to view item on auction website.](#)



125. One Midweek Overnight Stay at the Deacon

Donated by Deacon Hospitality Group LLC

Fair Market Value: \$1,500

Starting Bid: \$700

Enjoy a grand central area with eight adjacent bedrooms made for unwinding, exploring, and creating memorable experiences. Each room features luxury bedding and mattresses by Wright, unique layouts, original stained glass windows, Sonos speakers, Wifi and many thoughtfully chosen details.

The Deacon - A circa-1906, Watson & Huckel-designed church - is getting a new life as The Deacon, a invisible service hotel and event space offering a unique, thoughtfully-curated guest experience, designed for a diverse set of occasions, gatherings, and creative projects. The team at the Deacon felt it important to preserve the gorgeous, soaring limestone, Gothic Revival-style church, that was almost a victim to the wrecking ball two years ago before it was designated historic.

[Click here to view item on auction website.](#)



126. *Four Ornamental Metal Boxes (1)*

Artist: M. Dale Chase

Dimensions: .75"-1.5" x 1"-2" x 1"-1.5"

Materials: Blued gunmetal, silver, guilloché,
and 14k gold

Donated by Tina and Albert LeCoff, Dale
Chase Bequest, contributor will receive 50%
of winning bid.

Fair Market Value: \$1,500

Starting Bid: \$750

M. Dale Chase took to ornamental turning after 32 years as a vascular surgeon. Ornamental turning utilizes Holtzapffel and Rose Engine lathes developed in England during the 1800's. Shaped metal cutters are oriented to cut patterns into wood. Chase first experimented with a 150 year-old Holtzapffel lathe, then transitioned to using the Rose Engine lathe. From early boxes patterned on the exterior, his focus shifted to simple forms with interior patterns.

[Click here to view item on auction website.](#)



127. ***Legends of Cheese Collection***

Donated by Di Bruno Bros.

Fair Market Value: \$125

Starting Bid: \$70

“We provide extraordinary food experiences, inspired by our legacy. Also, we just really love cheese.

The Legends of Cheese Collection features iconic cheeses, produced in limited quantities by the finest cheesemakers in the world. Each cheese represents the best in its class and is hand-selected for quality.”

-Di Bruno Bros.

[Click here to view item on auction website.](#)



128. Bon Marché Case of Wine

Donated by Moore Brothers Wine Company

Fair Market Value: \$195

Starting Bid: \$110

*****Shipping is NOT included in the winning bid. Items MUST be picked up at Moore Brothers Wine Company in New Jersey*****

“Since our founding in 1996, we have brought together a wide variety of wines from the Old World as a "sampling" of the types we drink most often (and that keep our customers returning for more). The wines in this collection, chosen for their versatility and variety (and with a built-in discount), assure that the Bon Marché lives up to its French name; a "good deal." Notes on each of the wines are provided in the package.”

-Moore Brothers Wine Company

[Click here to view item on auction website.](#)



129. Teapot Set

Artist: Lori Katz

Dimensions: Lg- 14" x 16" x 6". Sm- 11" x 11" x 6"

Materials: White ware and glaze

Donated by Bruce Hoffman

Fair Market Value: \$400 pair (Lg- \$275, Sm- \$225)

Starting Bid: \$150

Lori Katz is a studio artist in the Washington, DC area. Her paintings and works in clay have been shown in juried and invitational exhibitions in the US, Europe and Asia, and is included in public and private collections throughout the world.

[Click here to view item on auction website.](#)



130. *Pedestal Vase, 2021*

Artist: Roberta Massuch

Dimensions: 11" x 7" x 5"

Materials: Stoneware, slip, and glaze

Donated by Roberta Massuch Ceramics

Fair Market Value: \$200

Starting Bid: \$80

Influenced heavily by the architecture of her surroundings, ceramicist **Roberta Massuch** creates functional pottery, sculpture, and 2d artworks. Massuch received her BFA in ceramics from Northern Illinois University and her MFA from Louisiana State University. Teaching positions include The Clay Studio, Tyler School of Art, and the Community College of Philadelphia. Her work has been exhibited at universities, institutions, galleries, and museums across the United States.

[Click here to view item on auction website.](#)



131. Soup Tureen

Artist: Val Cushing

Dimensions: 8" x 12"

Materials: Ceramic and glaze

Donated by Helen Drutt

Fair Market Value: \$500

Starting Bid: \$250

During his career, **Val Cushing's** meditative, yet functional, pots were included in more than 200 exhibitions, including numerous one-person shows. His work can be found in the collections of many public and private museums and galleries, including the Smithsonian, the Brooklyn Museum, the Cooper-Hewitt, and the Everson Museum of Art. This piece was commissioned for *Soup Tureens '76* at Campbell Museum of Art, Camden, NJ.

[Click here to view item on auction website.](#)



132. Necklace

Artist: Caroline Wischmann

Dimensions: *unprovided*

Materials: Ceramic beads and sponge coral

Donated by Adornments

Fair Market Value: \$200

Starting Bid: \$100

Caroline Wischmann began designing jewelry several years ago after retiring from her Interior Design career of 25 years. The inspiration for ADORNMENTS one-of-a-kind jewelry came from these many years in design and from her years of global travel with her consulting business, International Craft Consultants, Inc. Falling in love with the beautiful texture, color and shape of beads, inspired her to try to capture the exotic feeling of places such as Morocco, Tibet, Ethiopia and West Africa.

[Click here to view item on auction website.](#)



133. Shallow Black Porcelain Bowl

Artist: Lawrence Spitz

Dimensions: 12" x 2"

Materials: Porcelain

Donated by Penn Diagnostic

Fair Market Value: \$325

Starting Bid: \$100

"Porcelain is a naturally occurring mineral which produces the finest, hardest ceramics. I create black porcelain by adding a body pigment of non-toxic minerals (chromium and iron) to pure white porcelain. There is no glaze, The natural surface sheen develops during the firing as the porcelain and the body pigment fuse into a glass at high temperature. This bowl is food safe and dishwasher safe."

- Lawrence Spitz

[Click here to view item on auction website.](#)



134. *Fetish Necklace: Memory Objects*

Artist: Bruce Hoffman

Dimensions: approx. 20"

Materials: Various glass beads, found objects, buttons, and ceramic beads

Donated by Penn Diagnostic, contributor will receive 50% of winning bid.

Fair Market Value: \$325

Starting Bid: \$100

Bruce Hoffman is Director of Gravers Lane Gallery in Philadelphia. He has been working in the field of studio crafts for more than three decades. During these years he has taught at Moore College of Art & Design, lectured and been a guest critic for many colleges, and has had the honor to jury shows for many fine museums, guilds, and art centers across the country. *Fetish Necklace* is from a series based on memory objects and the fantastical garden.

[Click here to view item on auction website.](#)



135. *Ornamental Turned Box, circa 2007*

Artist: M. Dale Chase

Dimensions: 1.00625" x 2.9375"

Materials: African Blackwood and Boxwood

Donated by Tina and Albert LeCoff, Dale Chase Bequest, contributor will receive 50% of winning bid.

Fair Market Value: \$1,250

Starting Bid: \$600

M. Dale Chase took to ornamental turning after 32 years as a vascular surgeon. Ornamental turning utilizes Holtzapffel and Rose Engine lathes developed in England during the 1800's. Shaped metal cutters are oriented to cut patterns into wood. Chase first experimented with a 150 year-old Holtzapffel lathe, then transitioned to using the Rose Engine lathe. From early boxes patterned on the exterior, his focus shifted to simple forms with interior patterns.

[Click here to view item on auction website.](#)



136. *Handwoven Area Rug*

Artist: Claudia Mills

Dimensions: 2' x 3'

Materials: 100% cotton yarn and fabric strips
(Machine washable)

Donated by Claudia Mills

Fair Market Value: \$250

Starting Bid: \$100

“Building on my childhood fascination with designing clothes using novelty fabrics, I began weaving with large bright prints, lurex, ripstop nylon and plaids. This exploration led to my first rag rugs in 1985. I have now been weaving rugs for over three decades, adapting the traditional rag rug craft to my own contemporary aesthetic. As a designer I try to strike a balance between color and textural effects. Inspiration comes in many forms but foremost is the fabric itself.”

- Claudia Mills

[Click here to view item on auction website.](#)



137. *Dilated Brooch*

Artist: Forge & Finish

Dimensions: .75" x 2.25"

Materials: Sterling silver

Donated by Commonweal Gallery

Fair Market Value: \$350

Starting Bid: \$100

Dilated Brooch was inspired by fashion designers such as Rae Kawakubo and Ann Demeulemeester. This sterling silver brooch's domed base adds dimension to the wearer's ensemble using a magnetic form of clasp, the rounded backing disappearing under the wearer's clothes, leaving the minimalist domed top on the exterior.

Forge & Finish is culturally diverse, women owned and operated company intentionally focused on keeping things small.

[Click here to view item on auction website.](#)



138. Wharton Esherick Museum Package

Donated by the Wharton Esherick Museum

Fair Market Value: \$350

Starting Bid: \$100

This private tour for six of the Wharton Esherick Museum will include a copy of Esherick's biography for the host, which was written by museum co-founder Mansfield Bascom.

Wharton Esherick (1887 - 1970) was an internationally significant figure in the landscape of art history and American modern design. As a sculptor, Esherick worked primarily in wood and extended his unique forms to furniture, furnishings, interiors, buildings, and more. Esherick saw himself as an artist, not a craftsman, and his concern was with form, not technique. He pursued his artistic vision in forms that might turn to furniture or other sculptural furnishings.

[Click here to view item on auction website.](#)



139. *Sniffer*

Artist: Dona Dalton

Dimensions: 6" x 6" x 2"

Materials: Carved wood and paint

Donated by Gravers Lane Gallery, contributor will receive 50% of winning bid.

Fair Market Value: \$350

Starting Bid: \$100

From the *12 Days of Christmas*, *Sniffer* is hand-carved and painted wooden rabbit. Dalton is a graduate of the Philadelphia College of Art (now University of the Arts) where she majored in sculpture. She has been a participant of the Philadelphia Museum of Art Contemporary Craft Show, American Craft Made with the American Craft Council, and has shown extensively throughout the country.

[Click here to view item on auction website.](#)



140. Four Ornamental Metal Boxes (2)

Artist: M. Dale Chase

Dimensions: .75"-1.00625" x 1.5"-2,9375" x 1"-2"

Materials: Silver, guilloché, and 14k gold

Donated by Tina and Albert LeCoff, Dale Chase Bequest, contributor will receive 50% of winning bid.

Fair Market Value: \$1,500

Starting Bid: \$750

M. Dale Chase took to ornamental turning after 32 years as a vascular surgeon.

Ornamental turning utilizes Holtzapffel and Rose Engine lathes developed in England during the 1800's. Shaped metal cutters are oriented to cut patterns into wood. Chase first experimented with a 150 year-old Holtzapffel lathe, then transitioned to using the Rose Engine lathe. From early boxes patterned on the exterior, his focus shifted to simple forms with interior patterns.

[Click here to view item on auction website.](#)



141. #5

Artist: Don Miller

Dimensions: 6" x 9" x 3"

Materials: Ash wood and stone box

Donated by Don Miller

Fair Market Value: \$250

Starting Bid: \$100

Don Miller is a Philadelphia based woodworker, instrument maker and educator. He holds a BA in German from the University of Kansas and an MFA in 3D Design from The University of Wisconsin-Madison. He recently retired as an Associate Professor in the Craft+ Material Studies program at The University of the Arts and inhabits his own workshop in Germantown, PA. His work investigates natural material, functional form and historical technology. This piece is #5 in a series of small pieces that were made of similar likeness.

[Click here to view item on auction website.](#)



142. WabiSabi

Artist: Marianne Tebbens

Dimensions: 24" x 7" x 7"

Materials: High-fired porcelain

Donated by Marianne Tebbens

Fair Market Value: \$250

Starting Bid: \$75

My work in clay has evolved over the years from mostly functional, with the vessel as the predominant form, to an increasing number of sculptural pieces, with the human face, hands, torso, and elements of nature emerging. This occurs in conjunction with my work as a Psychotherapist and Art Therapist, as well as through my own personal growth experiences. I work in stoneware, porcelain, Raku and earthenware clays and fire in reduction, wood, salt, Raku, and primitive types of kilns. Process excites me, and the Alchemy of clay, form and fire offer me infinite possibilities.

[Click here to view item on auction website.](#)



143. *Quarters Clock*

Artist: Tuff Stuff Studios

Dimensions: ~12"

Materials: Yarn, clock hands, and clock innards

Donated by Commonweal Gallery

Fair Market Value: \$125

Starting Bid: \$65

Tuft Stuff Studios is the brainchild of partners Brooks Bell and Vi Vu. Their tongue-in-cheek approach to making objects imbues their hand-tufted textiles with a playful sensibility. The battery powered Quarters Clock is backed and ready to hang, with a shag texture offers an extra soft and fun sensory experience.

[Click here to view item on auction website.](#)



144. One Week at Villa Sassella

Donated by The Skylight Foundation

Fair Market Value: \$10,000

Starting Bid: \$2,000

Villa Sassella is situated in the hamlet of Compignano approximately 15 kilometres from Lucca in Tuscany, Italy.

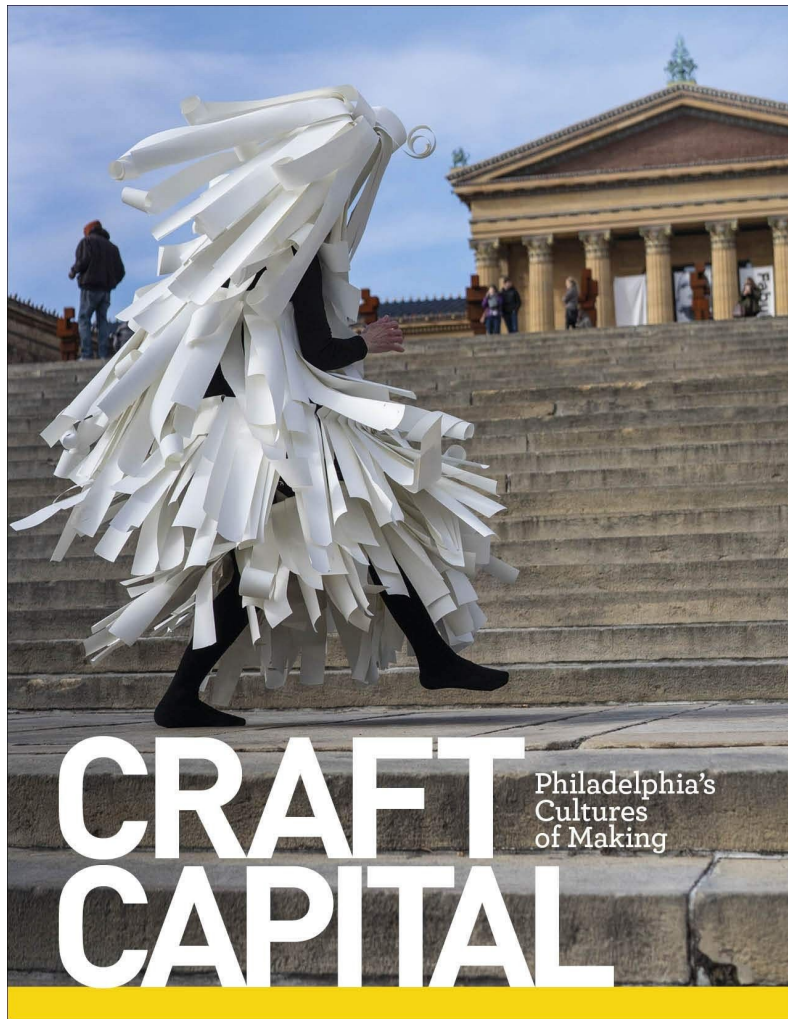
The house is thought to date back to the 14th century and was restored in the 1970s, having been derelict since the 1940s. It has five bedrooms, one twin and four double.

The Pool Suite has an adjoining room with two small single beds which are ideally suited for children. All the rooms have ensuite facilities. There is a fully working kitchen, a large dining room, and several sitting rooms.

Sassella operates on a different basis from most houses you may have rented in the past. Here you need not worry at all about running the house. Cooking, cleaning and laundry services are all provided by our housekeeper.

Win this remarkable vacation designation and your stay at Villa Sassella will truly be a once-in-a-lifetime experience. Airfare not included.

[Click here to view item on auction website.](#)



CRAFT CAPITAL

Philadelphia's
Cultures
of Making

145. Signed Copy of Craft Capital and Tote bag

Donated by CraftNOW

Fair Market Value: \$60

Starting Bid: \$30

Craft Capital: Philadelphia's Cultures of Making is CraftNOW's second publication. This copy has been signed by Helen Drutt on her dedication page.

CraftNOW Philadelphia unites the leading institutions, artists, and patrons of Philadelphia's craft community to celebrate the city's rich legacy and its important role as an incubator for arts based in wood, clay, fiber, metal, and glass. We invite residents and visitors alike to explore Philadelphia's innovations in the world of the handmade through an itinerary of hands-on activities, academic programming, events and tours, and directories of local galleries, studios, and makers.

[Click here to view item on auction website.](#)



CraftNOW was founded by a consortium of individuals, galleries, museums, universities, and civic organizations. Through diverse background, CraftNOW has been united in its desire to capitalize upon Philadelphia's outstanding craft resources and highlight the city's continuing role in defining the future of craft. With its inaugural events of 2015, CraftNOW began its mission to showcase the art of the handmade.

Questions? Contact Leila.Cartier@CraftNOWPhila.org or Cierra@CraftNOWPhila.org

CraftNOWPhila.org | @CraftNOWPHL